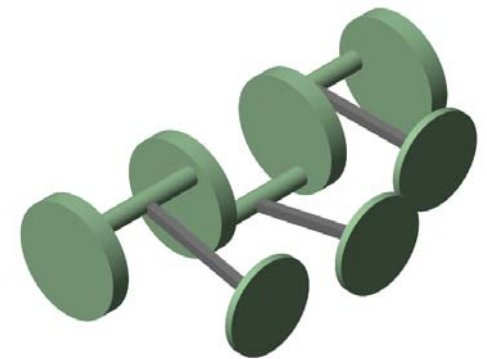
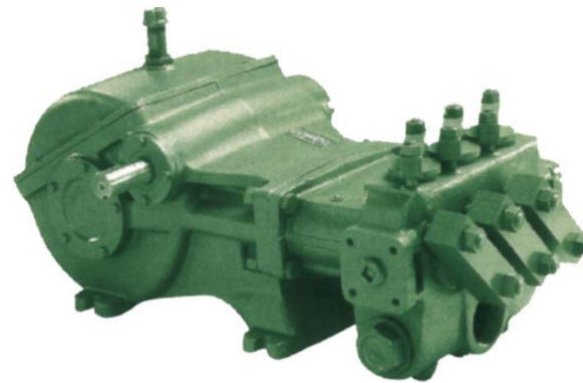
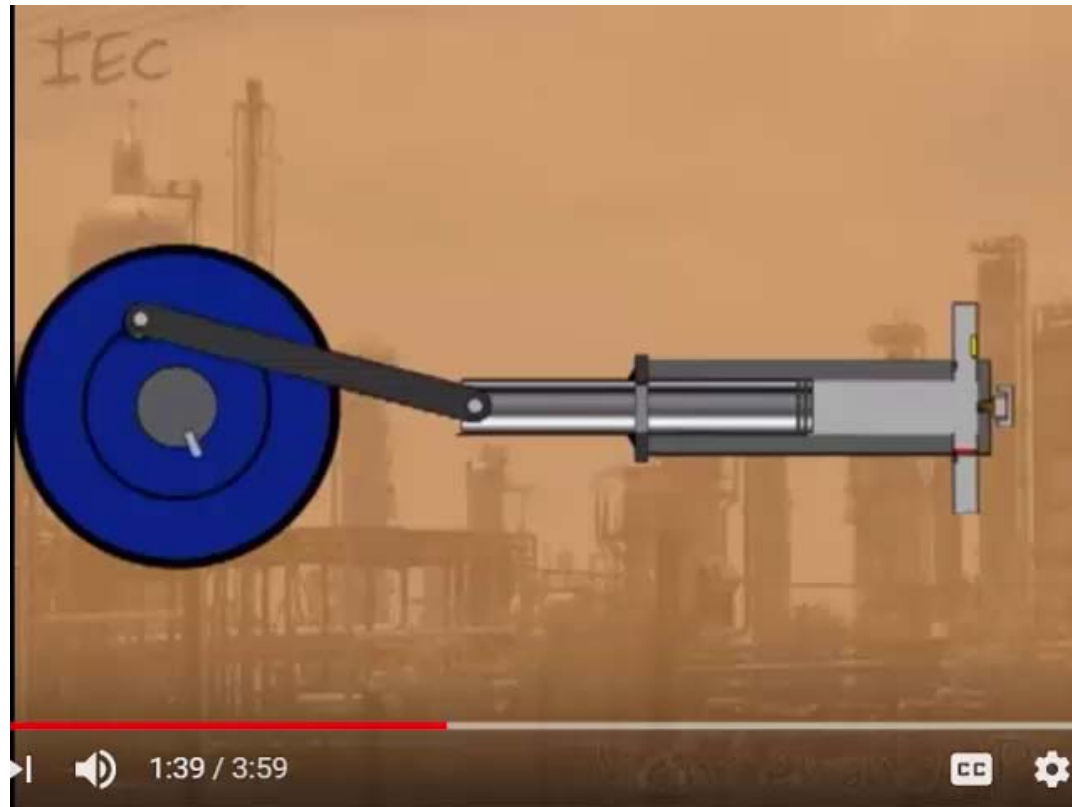


Employing Simscape to model electro-mechanical systems in Simulink

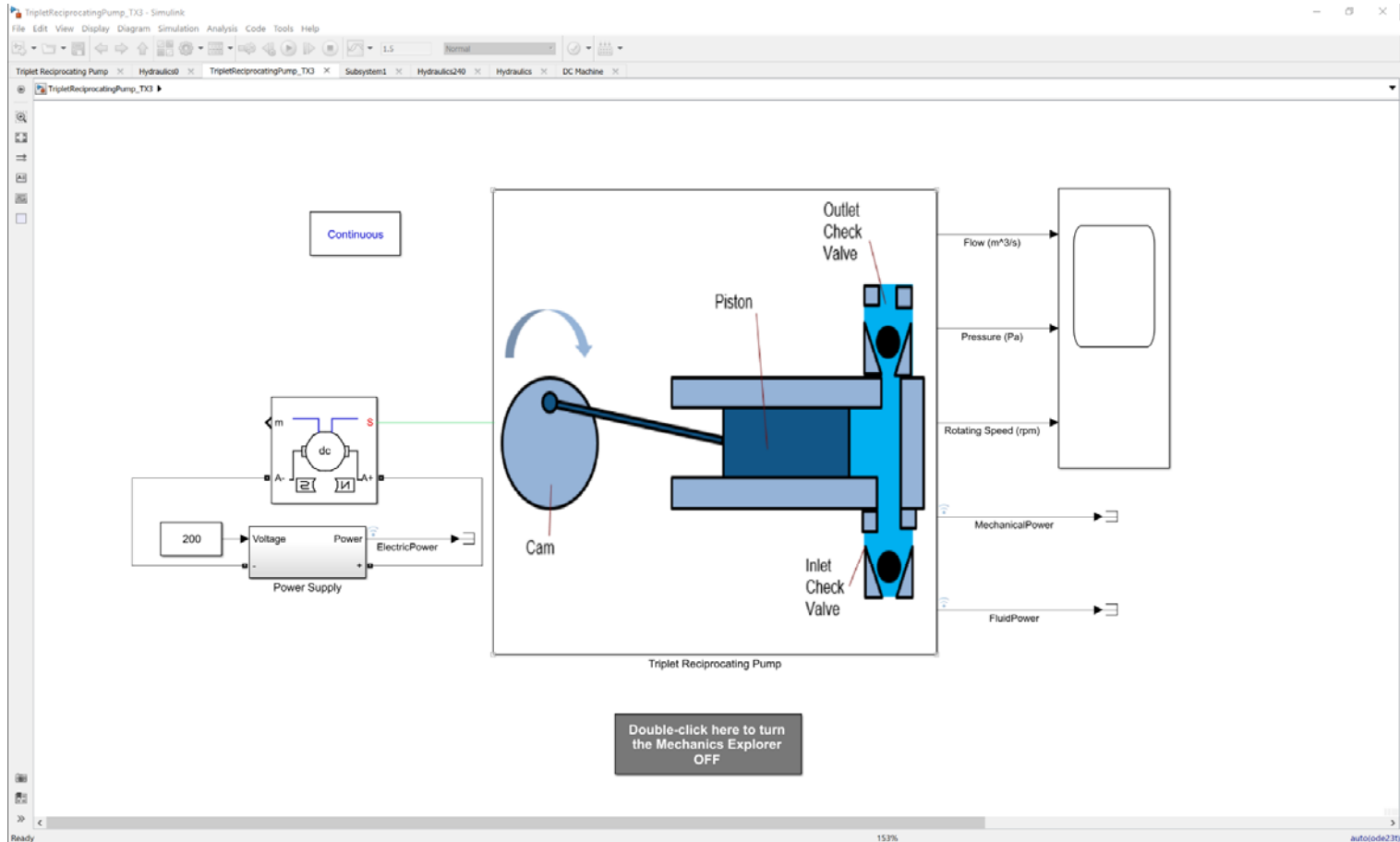
Terry Denery, PhD
MathWorks, Principal Applications Engineer



Reciprocating Pumps



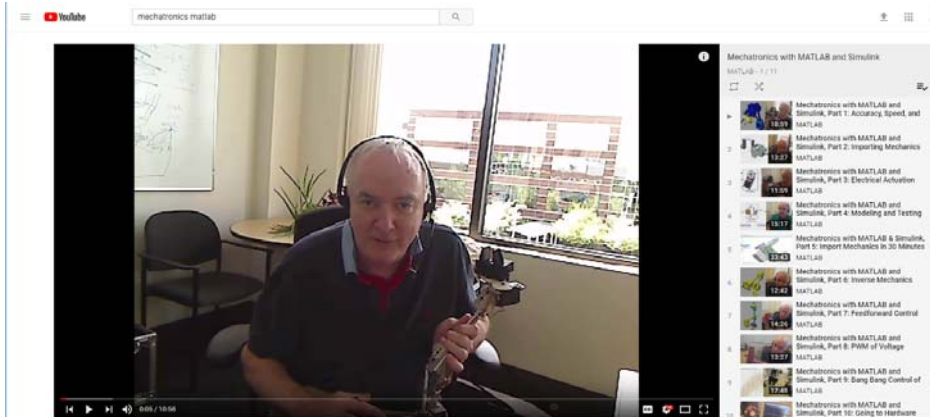
Simulink



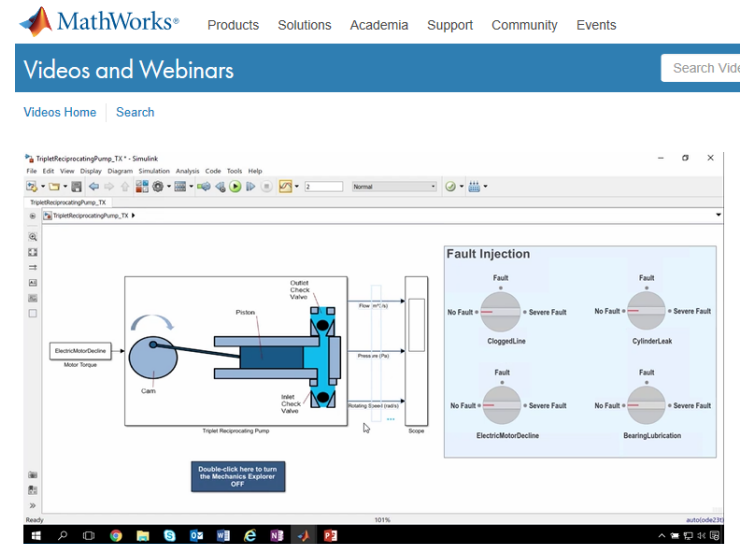
Check me out on Youtube!



Model-Based Design
Of Control Systems



Mechatronics with MATLAB & Simulink



Predictive Maintenance with Simulink: Onboard Diagnostics

Terry Denery, MathWorks
Tern Xiao, MathWorks

“There are just certain things you can’t make electrons do;
there are certain things you can’t make plastics do . . . ”

- Steve Jobs